



Science support within the South African National Parks adaptive management framework

Authors:

Judith M. Kruger¹
Sandra MacFadyen¹

Affiliations:

¹South African National
Parks, Skukuza, South Africa

Correspondence to:

Judith Kruger

Email:

judith.botha@sanparks.org

Postal address:

PO Box 178, Skukuza 1350,
South Africa

Dates:

Received: 21 June 2010

Accepted: 08 Mar. 2011

Published: 13 May 2011

How to cite this article:

Kruger, J.M. & MacFadyen,
S., 2011, 'Science support
within the South African
National Parks adaptive
management framework',
Koedoe 53(2), Art. #1010,
7 pages. doi:10.4102/koedoe.
v53i2.1010

© 2011. The Authors.
Licensee: OpenJournals
Publishing. This work
is licensed under the
Creative Commons
Attribution License.

'Behind all good science is good science support.' Implementing a successful strategic adaptive management (SAM) framework requires an effective science support structure. This structure must be effective in all areas of data management, starting with data collection and ending with the dissemination of knowledge, to facilitate timeous management decisions and associated actions. Accordingly, South African National Parks has embraced the use of various technologies to enable the effective implementation of a functional support structure. This paper described these technologies and discussed how they benefit the implementation of the SAM framework.

Conservation implications: The importance of functional support structures in science and conservation management is frequently undervalued in a system where emphasis is placed on scientific products. In order to promote research and facilitate analysis, sound data management practices are essential to integrating knowledge into an organisation's institutional memory.

Introduction

South African National Parks' (SANParks) network of 19 protected areas traverse extensive environmental gradients and biodiversity and are exposed to ever-changing and intensifying global population pressure (Balmford *et al.* 2001). In response, SANParks has adopted an adaptive management approach to biodiversity conservation. This style of management recognises the heterogeneous nature of ecological systems (Pickett, Cadenasso & Benning 2003) by ensuring management actions are spatially dynamic over time. If scientists and managers do not adapt and learn from their management actions, conservation will fail, to the detriment of the species and ecosystems being protected. Moreover, if adaptive management is to be effective in SANParks, science support structures must be in place to sustain the research needed to assess the outcomes of monitoring and management interventions. These structures should be aimed at capturing the learning that individuals develop, and integrating it into the collective or institutional memory of the group (Salafsky, Margoluis & Redford 2001).

The process of science support (Figure 1) is rooted in the development of systems for storing, organising and accessing information. This process includes, (1) the ongoing collection of new data, (2) the storage and documentation of data, (3) the dissemination and sharing of data, (4) data analysis, (5) further research and (6) the promotion of knowledge generation. The ideal result is a distributed network centre with data structures and standards in place to allow scientists and managers to apply and adjust management strategies appropriately (Louisiana Protection and Restoration 2009). However, SANParks represents a diverse range of ecosystems, which is mirrored by the diversity of environmental data that must be collected to facilitate research in SANParks. As a result, data collection methods must be dynamic as they may include large ranges of biotic and abiotic variables, which could produce vast and heterogeneous datasets. Not surprisingly, it has proven difficult to build data management and analytical systems to accommodate these data in general (Jones *et al.* 2006). Traditionally, each type of data is stored in customised databases that are not connected to one another, so the data are largely inaccessible for cross-cutting analysis and modelling.

In the case of SANParks' thresholds of potential concern (TPCs; see Roux & Foxcroft 2011), which form an integral part of the strategic adaptive management (SAM) framework, a number of different datasets are required for individual analyses. For this reason, creating a streamlined system of data collection, analysis, presentation of results and knowledge feedback, will ensure timeous and accurate outputs. In addition to maintaining this technology, organisations also need to develop human capital and institutional memory to ensure continuity in the event that a key individual leaves the organisation. In most cases, people are the primary driving forces behind change or the adoption of new technology within an organisation. If one or more of these drivers, or change agents, disappear from the system, the programmes previously under their

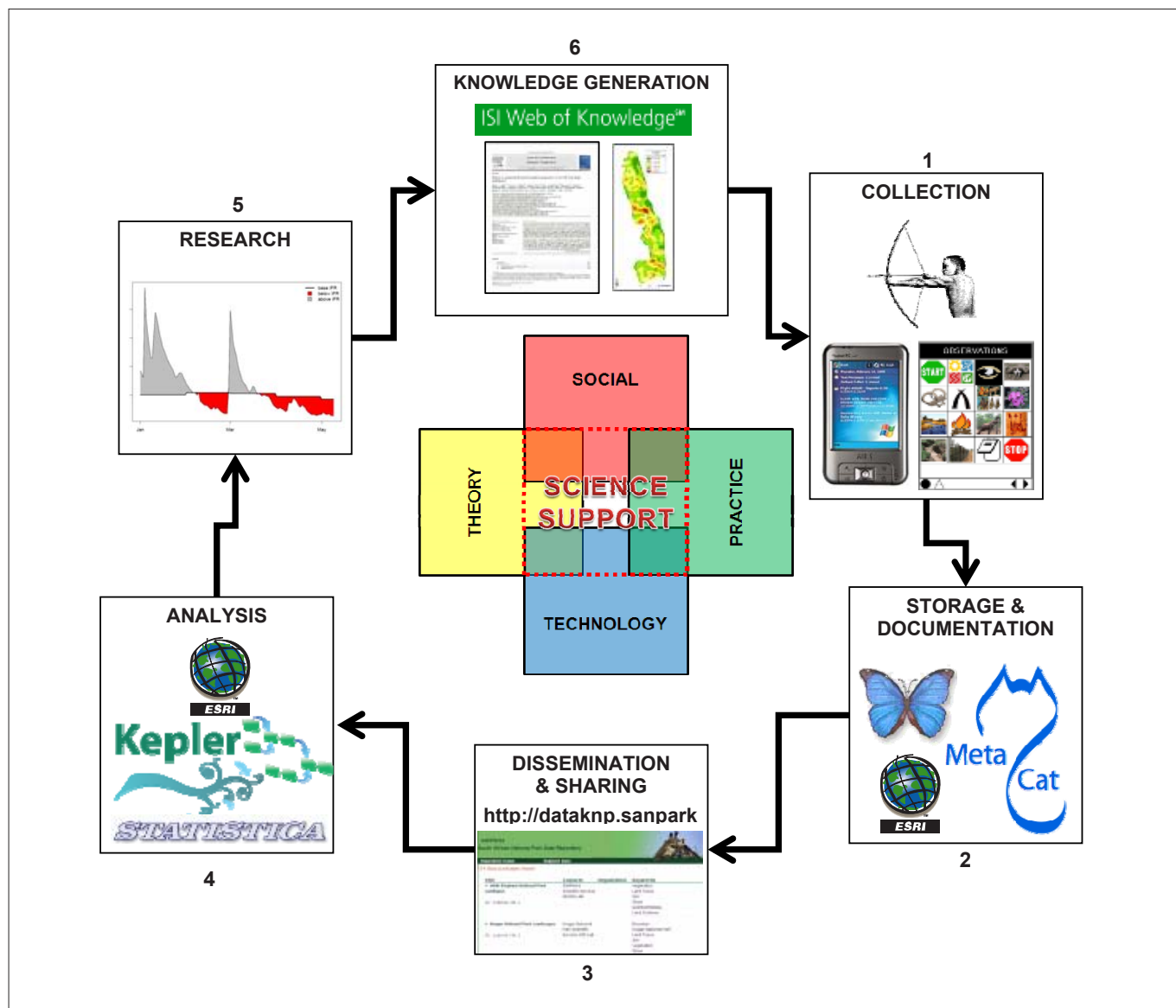


FIGURE 1: The South African National Parks (SANParks) science support process indicating the relationship between the six process steps.

supervision may be at risk of collapse if the proper structures are not in place to absorb the impact. We describe each step of the science support process in Figure 1, indicating the innovations and experience to be gained from it.

SANParks science support process

Data collection

SANParks has a wide variety of data that must be collected to monitor the state of the environment successfully. To ensure the accuracy of the data is preserved and the collection process standardised, a hand-held computer application (*CyberTracker*) is customised for each monitoring programme. This icon-based system allows both literate and nonliterate field workers to record observations, with latitude and longitude coordinates, using a personal digital assistant (PDA) device that features an integrated global positioning system (GPS). In this way, data collected in the field are simultaneously captured electronically using graphic check lists, which enhance data accuracy. The *CyberTracker's* icon-

based system also allows computer illiterate field workers to record data with minimal training, thereby enhancing organisational skills development and capacity building. As a result, this data collection process can enable field rangers to contribute directly to the management and research of each park by simply collecting basic environmental data during their regular daily patrols (e.g. distribution of rare and endangered species, availability of surface water and disease outbreaks). In addition, the integrated GPS ensures that separate GPS skills are not necessary to record latitude and longitude coordinates of each observation, whilst the moving map functionality allows the user to pinpoint his position on a 1:50 000 or 1:250 000 topographical map or aerial photograph at any time (see MacFadyen 2007 for operational details).

The value of the *CyberTracker* system was first recognised by Mr Douw ('Swannie') Swanepoel in 2000, when 44 *Palm IIIe* organisers and 44 *Garmin 12XL* GPS devices interfaced via a cable were purchased for the Kruger National Park (KNP).



In 2003, a further 120 *Handspring Visor Deluxe* PDAs with integrated *Magellan* GPS companions were purchased. As a result, each of the 22 management sections in the KNP were issued with five PDAs for deployment with field rangers and five additional PDAs were issued to the Scientific Services Division in Skukuza for various research projects. Since then, collective fundraising initiatives have raised over R200 000.00 and enabled SANParks to purchase new Pocket PCs (with integrated GPS) for many other parks.

As a result, *CyberTracker* is operational in all South African national parks (Figure 2a). Established databases include ranger patrols, vegetation condition assessments, animal behaviour monitoring, rare and endangered species listings, and invasive species distribution mapping. Each database has been customised to facilitate conservation management, research and monitoring (Figure 2b). The largest of these databases is the ranger patrol system, which is managed by a network of section rangers and operated by a core of field rangers across all parks. The system is customised in-house with an icon-based interface that features English and local language descriptions (e.g. Shangaan) for the collection of daily patrol information and basic environmental data. According to MacFadyen (2009), the information gathered during these ranger patrols is used by SANParks management to:

- plan section patrols for area-integrity mapping
- provide an early warning system for disease outbreaks
- identify trends in illegal exit and entry points
- enable the detection and control of invasive alien species
- report fence-breaks to the State Veterinary Department for animal health purposes.

In addition, the programme supports local community projects such as the Xilongana Craft Programme in the Thulamahashe region, which designs and produces protective canvas cases for the Pocket PCs. In general, the ranger patrol system aims to enhance park-specific environmental management and research through field monitoring (see MacFadyen 2007 for more detail about the SANParks *CyberTracker* program).

Scientists use the collected data to facilitate research and assist in making informed management decisions regarding rare species monitoring (Endangered Wildlife Trust 2011; Murn 2009), invasive species research (Dietemann, Lubbe & Crewe 2006; Foxcroft *et al.* 2009; Foxcroft *et al.* 2010; Hui *et al.* 2011), fire mapping, archaeological inventorying, species distribution mapping, ecosystem interactions (Burkepile *et al.* 2008; Somers & Hayward 2009), and veterinary-wildlife interfaces (Brahmbhatt *et al.* in press; Ferguson & Hanks 2010; Jori *et al.* 2009).

Data storage and documentation

Once data has been collected it needs to be correctly archived and, more importantly, clearly documented in order to maintain its long-term usability. SANParks uses a flexible, structured metadata standard called Ecological Metadata Language (EML), which is a metadata standard developed

by the ecological community in the USA (Fegraus *et al.* 2005). EML was developed to address the lack of dataset documentation and to provide structure to traditionally unstructured information (i.e. tabular data with no metadata; Michener *et al.* 1997). The EML standard evolved by incorporating various elements from other metadata language standards and is supported by a wide range of users ensuring continual improvement. As the EML structure is modular and easily extensible it can be used for the documentation of both metadata and datasets in a number of different data formats. EML requires multiple levels of documentation to be specified.

The first level includes dataset identification, which is documented in the title, abstract and keyword fields. The next level, known as the discovery level, includes information on both the geographic extent and the temporal coverage of the datasets. The geographic extent is captured with spatial coordinates that can then be used to plot coordinates on a map. Applications can leverage both the geographical and date-time fields for dataset discovery. The evaluation level metadata includes information about the methods used, as well as the project level information. These methods indicate how the data was collected and may be described as a set of hierarchical processes with substeps.

The third level contains access information, which indicates who may change and read the data and metadata. Furthermore, this information also describes where the data can be obtained and the required data format. The final level is the logical model information that describes the structure of data tables and their variables. Each variable requires a name, description and a measurement type to be captured. Once the EML has been created for a particular data package, which includes the metadata and the data tables, it can be uploaded into a data repository where it can be browsed, downloaded and archived. The Knowledge Network for Biocomplexity (KNB; <http://knb.ecoinformatics.org/index.jsp>) now has 16 partner organisations who contribute EML data and metadata to a global data repository, including SANParks. An added advantage of being a part of this global network is the replication of data between sites, which reduces the risk of data loss. The access rules do not change with replication, which means that the dataset owner can still determine who is allowed to access the data without needing to be concerned that the information will be amended once replication occurs.

Collating accurate metadata about heterogeneous datasets can be time consuming and therefore difficult without supporting software tools. As a result, SANParks adopted the free software product *Morpho* (Higgins, Berkley & Jones 2002) to create EML metadata to be uploaded into the SANParks data repository (<http://dataknpsanparks.org/sanparks>). *Morpho* creates EML using a wizard front end for the simpler metadata, with an EML tree for the more complex metadata. *Morpho* is then used to upload the data to the SANParks data repository, which can then be searched through a web interface. An extension to this system allows spatial

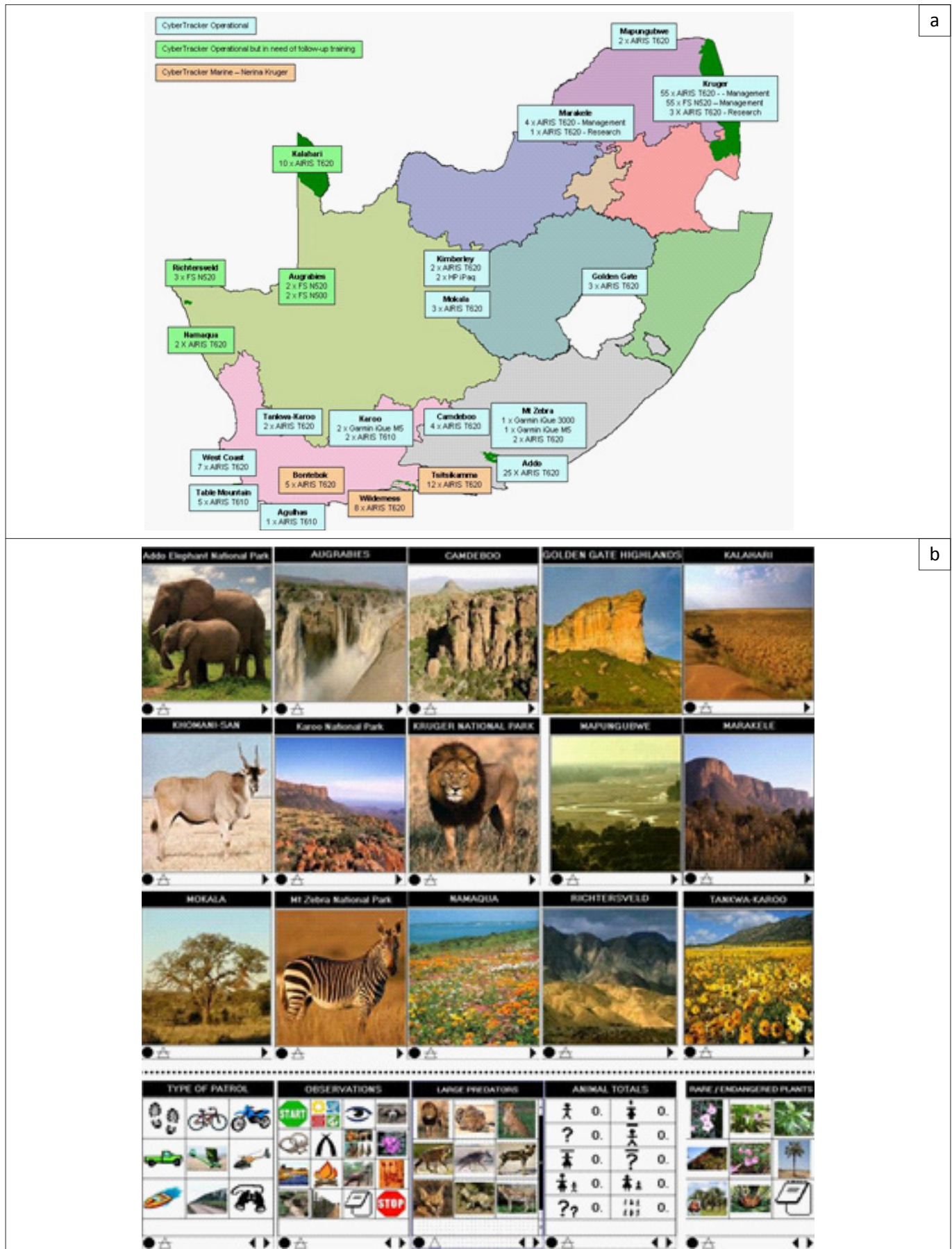


FIGURE 2: (a) Country-wide distribution of the South African National Parks' (SANParks) CyberTracker program, with operational databases (b) in 18 of 21 SANParks customised to facilitate conservation management, research and monitoring.

layers, with standard Federal Geographic Data Committee metadata created through *ArcGIS*, to be incorporated into the repository. This additional functionality allows searches for spatial and nonspatial data simultaneously.

Data dissemination and sharing

Following the capture of data (and associated metadata) in the data repository, software tools can be automated to access this information and perform various analyses. The network of data repositories allows users to search for data from any of the participating sites using keywords or localities of interest (see <http://dataknpsanparks.org/sanparks>). This promotes integration of global ecological data and allows for collaboration across scales, as well as transcontinental analysis.

Data analysis

Although data can be searched and shared across all sites globally, as indicated earlier, data stored in the SANParks database are used in standardised routine analyses to assess whether the thresholds of specific ecological variables have been exceeded. These thresholds provide upper and lower limits of acceptable change in specific ecological indicators (Roux & Foxcroft 2011). The TPCs are therefore developed to provide early warning signs of impending unacceptable changes. For example, one of the key concerns and focus areas for TPC development has been on river management (for a full treatise see McLoughlin *et al.* 2011 and Pollard, Du Toit & Biggs 2011). Excessive abstraction of water upstream of the KNP has lowered flow volumes below, inhibiting the functional processes of the river ecosystems. These thresholds, or in-stream flow requirements (IFR), have been determined for all perennial rivers. The monitoring data is analysed for

each river in order to determine whether these thresholds (IFRs) have been exceeded. To accomplish these kinds of cross-scale and cross-disciplinary analyses, an analytical tool is required which can interface with a variety of data sources and provide access to commonly used analytical tools. One such approach is to use a scientific workflow system, such as *Kepler* (Ludäscher *et al.* 2006), to orchestrate the analysis (Figure 3). Scientific workflows in general and *Kepler*, in particular, have the capability to access multiple analytical systems such as *R* and *Matlab*, as well as other statistical and modelling systems. Each workflow can consist of a series of analytical steps, starting from data cleaning and concluding with complex analytical procedures to produce reports and visual outputs. For example, Figure 4 shows the results of the river-flow analysis, indicating periods when the threshold was exceeded (i.e. where river flow was below minimum requirements, indicated in red).

Using a workflow approach brings with it a number of advantages. Firstly, it enables users to determine clearly the dataset version used for a particular analysis, thereby reducing errors. This allows analyses to be rerun on various versions of the datasets. Secondly, the workflow procedure and the analytical outputs can also be uploaded to the data repository, allowing the same workflow procedure to be rerun later and the outputs archived. SANParks has adopted *Kepler* to analyse the data collected through routine monitoring programmes (Figure 3) and thus detect any breaches of the TPCs.

However, park managers need these analyses to be run on a regular basis to enable rapid decision making. Additionally, the reports and figures generated by the analyses need to be shared broadly with a variety of management stakeholders. As such, development has begun on a web-based execution

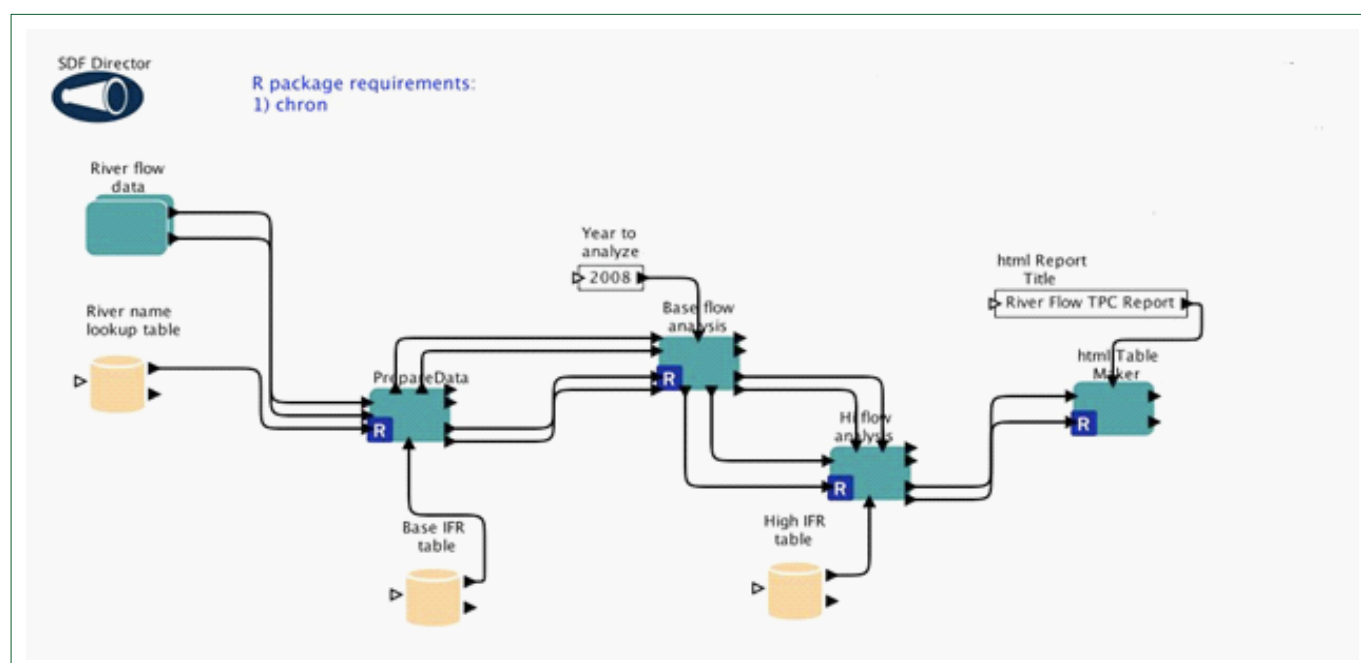
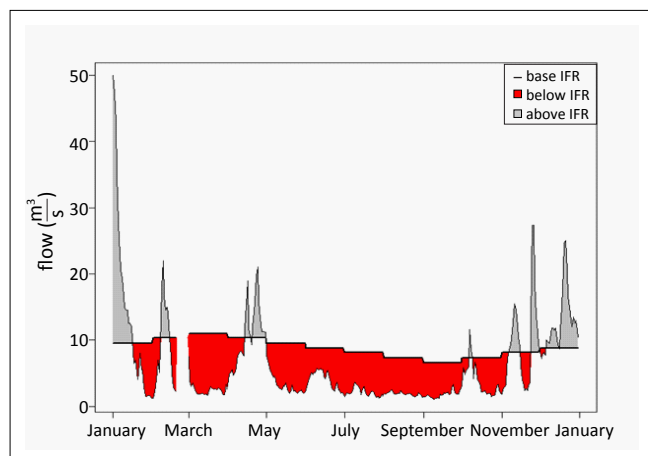


FIGURE 3: The Kepler scientific workflow application uses river-flow (water volume) data from the data repository to analyse whether predefined thresholds have been exceeded.



IFR, in-stream flow requirement; TPC, thresholds of potential concern.

FIGURE 4: River flow analyses for the Letaba River for the period 01 January 2007 – 31 December 2007, where the minimum in-stream flow requirement (IFR) is determined for all the main rivers in the Kruger National Park, providing a threshold against which to examine daily flow rates. The IFR is measured in m³/second.

and reporting system that will make all outputs broadly accessible to the necessary stakeholders.

Conclusion

Adaptive management is a systematic, rigorous and scientifically defensible approach to learning based on outcomes of management actions (Walters & Holling 1990). Strategic adaptive management, as practiced in SANParks, is more pragmatic and goal-orientated and is reliant on an effective science and management partnership (Rogers 1998). As a result, the criteria for the success of SAM include both biological and social measures, encompassing learning and the application of new knowledge (Kleiman *et al.* 2000). However, a gap exists at both the social and technological levels of SAM, including institutionalisation and implementation (Coleman *et al.* 2010; Rogers 1998). Although adaptive management practices should include the documentation of the research processes followed and the results achieved, on which management decisions can be based, a technological divide often prevents competent data management. The science support tools we described here aim to harness current developments in technology to facilitate the implementation of the adaptive management process.

Acknowledgements

We would like to acknowledge Mr Douw ('Swannie') Swanepoel posthumously for introducing the *CyberTracker* program to SANParks and for his unyielding dedication to the KNP and conservation in general. We would further like to acknowledge the support of various funders who have supported the SANParks *CyberTracker* program over the years, namely, *Deutsche Gesellschaft für Internationale Zusammenarbeit*, Sappi Limited, Mrs Erna Goodwin estate, Thubelisha Homes, Richtersveld Poverty Relief Unit, UNITRANS, MEDSCHEME, West Rand Honorary Rangers, SANParks forum moderators and members (<http://www.sanparks.org/forums/>), and over 50 members of the general public (<http://www.sanparks.org/parks/kruger/conservation/scientific/donations/cybertracker>). Finally, we would like to acknowledge the staff at the National Centre for Ecological Analysis and Synthesis for development and implementation of these tools, as well as the A.W. Mellon Foundation for funding.

References

- Balmford, A., Moore, J.L., Brooks, T., Burgess, N., Hansen, L.A., Williams, P., *et al.*, 2001, 'Conservation conflicts across Africa', *Science* 291, 2616–2619. doi:10.1126/science.291.5513.2616, PMID:11283376
- Brahmbhatt, D.P., Fosgate, G.T., Dyason, E., Budke, C., Gummow, B., Jori, F., *et al.*, in press, 'Contacts between domestic livestock and wildlife at the Kruger National Park Interface of the Republic of South Africa', *Preventive Veterinary Medicine*.
- Burkepile, D., Smith, M.D., Fynn, R.W.S. & Knapp, A.K., 2008, 'Interactions between herbivore size and fire regime on plant community structure', in South African National Parks (eds.), *Reports on scientific research projects undertaken in the savanna parks of the South African National Parks during 2008. Project Reports KNP 15/1/2–2008*, p. 23, SANParks, Pretoria.
- Coleman, A.M., Wigmosta, M.S., Lane, L.J., Tagestad, J.D. & Roberts, D., 2010, 'GIS-based adaptive management decision support system to develop a multi-objective framework: A case study utilizing GIS technologies and physically-based models to achieve improved decision making for site management', *Journal of Map and Geography Libraries* 4(2), 269–284.
- Dietemann, V., Lubbe, A. & Crewe, R.M., 2006, 'Human factors facilitating the spread of a parasitic honeybee in South Africa', *Journal of Economical Entomology* 99, 7–13. doi:10.1603/0022-0493(2006)099[0007:HFFTSO]2.0.CO;2
- Endangered Wildlife Trust, 2011, 'The Endangered Wildlife Trust: Birds of prey programme. Registered SANParks research project', viewed 04 February 2011, from <https://www.ewt.org.za/WHATWEDO/OurProgrammes/BirdsofPreyProgramme.aspx>
- Fegraus, E., Andelman, S.J., Jones, M.B. & Schildhauer, M., 2005, 'Maximizing the value of ecological data with structured metadata: An introduction to Ecological Metadata Language (EML) and principles for metadata creation', *Bulletin of the Ecological Society of America* 86(3), 158–168. doi:10.1890/0012-9623(2005)86[158:MTVOED]2.0.CO;2
- Ferguson, K. & Hanks, J. (eds.), 2010, 'Fencing impacts: A review of the environmental, social and economic impacts of game and veterinary fencing in Africa with particular reference to the Great Limpopo and Kavango-Zambezi Transfrontier Conservation Areas', Mammal Research Institute, Pretoria, viewed 04 February 2011, from http://www.wcs-ahead.org/gltfca_grants/grants.html
- Foxcroft, L.C., Richardson, D.M., Rouget, M. & MacFadyen, S., 2009, 'Patterns of alien plant distribution at multiple spatial scales in a large national park: Implications for ecology, management and monitoring', *Diversity and Distributions* 15, 367–378. doi:10.1111/j.1472-4642.2008.00544.x
- Foxcroft, L.C., Jarošík, V., Pyšek, P., Richardson, D.M. & Rouget, M., 2010, 'Protected area boundaries as a natural filter of plant invasions from surrounding landscapes', *Conservation Biology* 25(2), 400–405. doi:10.1111/j.1523-1739.2010.01617.x
- Higgins, D., Berkley, C. & Jones, M.B., 2002, 'Managing heterogeneous ecological data using Morpho', in J. Kennedy (ed.), *Proceedings of the 14th International Conference on Scientific and Statistical Database Management*, Washington DC, USA, July 24–26, 2002.
- Hui, C., Foxcroft, L.C., Richardson, D.M. & MacFadyen, S., 2011, 'Defining optimal sampling effort for large-scale monitoring of invasive alien plants: A Bayesian method for estimating abundance and distribution', *Journal of Applied Ecology*, viewed n.d., from <http://onlinelibrary.wiley.com/doi/10.1111/j.1365-2664.2011.01974.x/abstract>. doi:10.1111/j.1365-2664.2011.01974.x
- Jones, M.B., Schildhauer, M., Reichman, O.J. & Bowers, S., 2006, 'The new bioinformatics: Integrating ecological data from the gene to the biosphere', *Annual Review of Ecology, Evolution, and Systematics* 37, 519–544. doi:10.1146/annurev.ecolsys.37.091305.110031
- Jori, F., Vosloo, W., Du Plessis, B., Bengis, R., Brahmbhatt, D., Gummow, B., *et al.*, 2009, 'A qualitative risk assessment of factors contributing to foot and mouth disease outbreaks on the Western Boundary of Kruger National Park', *Revue Scientifique et Technique OIE* 28(3), 917–933.
- Kleiman, D.G., Reading, R.P., Miller, B.J., Clark, T.W., Scott, J.M., Robinson, J., *et al.*, 2000, 'Improving the evaluation of conservation programs', *Conservation Biology* 14(2), 356–365. doi:10.1046/j.1523-1739.2000.98553.x
- Louisiana Protection and Restoration, 2009, 'Final technical report: Adaptive management appendix', LACPR, US Army Corps of Engineers, New Orleans District, Mississippi Valley Division, New Orleans, pp. 1–14, viewed n.d., from <http://lacpr.usace.army.mil/default.aspx?ps=s&t=15&i=27>
- Ludäscher, B., Altintas, I., Berkley, C., Higgins, D., Jaeger-Frank, E., Jones, M., *et al.*, 2006, 'Scientific workflow management and the Kepler System', *Workflow in Grid Systems. Concurrency and Computation: Practice & Experience* 18(10, Special Issue), 1039–1065.
- MacFadyen, S., 2007, 'CyberTracker: Conservation in the palm of our hands', viewed 04 February 2011, from http://www.sanparks.org/parks/kruger/conservation/scientific/gis/CyberTracker_Poster.pdf
- MacFadyen, S., 2009, 'South African National Parks CyberTracker Programme', viewed 04 February 2011, from <http://www.sanparks.org/parks/kruger/conservation/scientific/gis/cybertracker.php>



Matlab, 2004, computer software, The MathWorks Inc., Natick.

McLoughlin, C.A., Deacon, D., Sithole, H. & Gyedu-Ababio, T., 2011, 'History, rationale, and lessons learned: Thresholds of potential concern in Kruger National Park river adaptive management', *Koedoe* 53(2), Art. #996, 27 pages. doi:10.4102/koedoe.v53i2.996

Michener, W.K., Brunt, J.W., Helly, J.J., Kirchner, T.B. & Stafford, S.G., 1997, 'Non-geospatial metadata for the ecological sciences', *Ecological Applications* 7, 330–342. doi:10.1890/1051-0761(1997)007[0330:NMFES]2.0.CO;2

Murn, C., 2009, 'Ecological characteristics of the White-headed Vulture *Trigonoceps occipitalis*' in southern Africa, in South African National Parks (eds.), *Reports on scientific research projects undertaken in the savannah national parks of South African National Parks during the year 2009 and projects that were completed during 2008. Research Project Reports 2009, KNP 15/1/2-2009*, p. 157, SANParks, Pretoria.

Pickett, S.T.A., Cadenasso, M.L. & Benning, T.L., 2003, 'Biotic and abiotic variability as key determinants of savanna heterogeneity at multiple spatiotemporal scales', in J.T. du Toit, K.H. Rogers & H.C. Biggs (eds.), *The Kruger experience: Ecology and management of Savanna heterogeneity*, pp. 22–40, Island Press, Washington DC.

Pollard, S., Du Toit, D. & Biggs, H.C., in press, 'River management under transformation: The emergence of strategic adaptive management of river systems in the Kruger National Park', *Koedoe*.

R, version 2.9.0, 2009, computer software, The R Foundation for Statistical Computing, s.l.

Rogers, K., 1998, 'Managing science/management partnerships: A challenge of adaptive management', *Conservation Ecology* 2(2), 1–4.

Roux, D.J. & Foxcroft, L.C., 2011, 'The development and application of strategic adaptive management within South African National Parks', *Koedoe* 53(2), Art. #1049, 5 pages. doi:10.4102/koedoe.v53i2.1049

Salafsky, N., Margoluis, R. & Redford, K., 2001, 'Adaptive management: A tool for conservation practitioners', *Biodiversity Support Program*, pp. 1–99, viewed n.d., from <http://www.rmportal.net/library/content/tools/biodiversity-conservation-tools/putting-conservation-in-context-cd/adaptive-management-resources/5-5-a.pdf>

Salafsky, N., Margoluis, R., Redford, K.H. & Robinson, J.G., 2002, 'Improving the practice of conservation: A conceptual framework and research agenda for conservation science', *Conservation Biology* 16(6), 1469–1479. doi:10.1046/j.1523-1739.2002.01232.x

Somers, M. & Hayward, M., 2009, 'Impact of climate change on predator prey preferences', in South African National Parks (eds.), *Reports on scientific research projects undertaken in the savannah national parks of South African National Parks during the year 2009 and projects that were completed during 2008. Research Project Reports 2009, KNP 15/1/2-2009*, p. 215, SANParks, Pretoria.

Walters, C.J. & Holling, C.S., 1990, 'Large-scale management experiments and learning by doing', *Ecology* 71(6), 2060–2068. doi:10.2307/1938620