



# Guiding conservation efforts in the Hantam–Tanqua–Roggeveld (South Africa) using diversity parameters

**Authors:**

Helga van der Merwe<sup>1</sup>  
Margaretha W. van Rooyen<sup>1</sup>

**Affiliations:**

<sup>1</sup>Department of Plant Science, University of Pretoria, South Africa

**Correspondence to:**

Helga van der Merwe

**Email:**

soekop@hantam.co.za

**Postal address:**

PO Box 1, Calvinia 8190,  
South Africa

**Dates:**

Received: 10 Aug. 2010

Accepted: 25 May 2011

Published: 15 Sept. 2011

**How to cite this article:**

Van der Merwe, H. & Van Rooyen, M.W., 2011, 'Guiding conservation efforts in the Hantam–Tanqua–Roggeveld (South Africa) using diversity parameters', *Koedoe* 53(1), Art. #1018, 9 pages. doi:10.4102/koedoe.v53i1.1018

The Hantam–Tanqua–Roggeveld subregion falls within the Succulent Karoo and Fynbos Biomes, which are both recognised as global biodiversity hotspots that should be conserved. The objective of this study was to gather baseline biodiversity information that can be used to guide conservation efforts. A total of 40 Whittaker plots were surveyed in the subregion and the various diversity parameters calculated from the data were compared across the subregion and to available data for the Succulent Karoo and Fynbos Biomes. Species richness per 1000 m<sup>2</sup> ranged from nine to 100 species across the subregion. Species richness for all plot sizes < 1000 m<sup>2</sup> was significantly lower for the Tanqua Karoo than for both the Winter Rainfall Karoo and Mountain Renosterveld. The latter two areas did not differ significantly from each other with regard to species richness. Species richness was significantly higher only at the 1000 m<sup>2</sup> scale in the Mountain Renosterveld compared to the Winter Rainfall Karoo. Evenness and Shannon and Simpson indices did not differ significantly between the Mountain Renosterveld and Winter Rainfall Karoo; however, these values were significantly higher than for the Tanqua Karoo.

A principal coordinate analysis of species richness data at seven plot sizes produced three distinct clusters. One cluster represented the Tanqua Karoo, with low species richness, evenness, and Shannon and Simpson indices. Another cluster represented mostly Mountain Renosterveld vegetation, which was characterised by a high species richness, evenness, and Shannon and Simpson indices. The third cluster was formed by the remaining Mountain Renosterveld plots as well as the Winter Rainfall Karoo plots.

The high species richness values found in the various vegetation units can add valuable information to the conservation planning arena by providing information on biodiversity parameters and their spatial distribution. This information can assist with conservation efforts in the Hantam, Tanqua and Roggeveld areas.

**Conservation implications:** Conservation and development of the Hantam–Tanqua–Roggeveld subregion is hampered by a lack of information on floristic diversity. The results of the current study indicated areas of low diversity and contrasting areas of high diversity. These data can be used to guide effective conservation and management of the floristic diversity.

## Introduction

The selection of protected areas worldwide has been largely influenced by economic, political and aesthetic factors rather than biodiversity representivity. Thus, protected area systems under-represent many critical elements of biodiversity. Conservation planning concerns the location and design of reserves that represent the biodiversity of a region, whilst at the same time enabling the persistence of that diversity by sustaining key ecological and evolutionary processes (Cowling *et al.* 2003; Desmet *et al.* 2002). However, successful implementation will be possible only if the planning incorporates socio-economic considerations (Berliner 2005) and identification of a general need to develop conservation landscapes that allow the maintenance of biodiversity whilst minimising impacts on the livelihoods of local people (Driver, Cowling & Maze 2003).

A number of broad steps to systematic conservation planning have been identified (Margules & Pressey 2000), which include:

- compiling data on the biodiversity of the planning region
- identifying conservation goals in the planning region
- reviewing existing conservation areas
- selecting additional conservation areas
- implementing conservation actions
- maintaining the required values of the conservation areas.



There is an increased need for the optimisation of protected area systems within the political and socio-economic context, on the one hand, and the recognition of the importance of the maintenance of ecological corridors and habitat connectivity, on the other.

Patterns of plant diversity and endemism have often been used for prioritising conservation activities (Lovett *et al.* 2000), with the premise that focusing on areas rich in species is the most cost-effective way to retain maximal biological diversity and maintain key ecological functions (Giam *et al.* 2011; Scott *et al.* 1987). Despite changing fashions and preoccupations, diversity has remained a central theme in ecology (Magurran 1988). Diversity has two components, namely species richness (i.e. the number of plant species in a given area) and species evenness, which indicates how well biomass or abundance is distributed amongst the species (Wilsey & Potvin 2000). Numerous indices exist that use species richness or evenness, as well as a combination of these two components, to quantify the diversity within a region. In spite of various criticisms, these indices can aid in addressing problems associated with the conservation of natural heritage or the changes in global ecology (Mouillot & Leprêtre 1999).

The Hantam–Tanqua–Roggeveld represented one of the planning domains into which the Succulent Karoo was subdivided during the Succulent Karoo Ecosystem Plan (SKEP) initiative. In the course of the SKEP programme it soon became apparent that planning of conservation and development in the subregion was hampered by a paucity of information on plant diversity (Cilliers *et al.* 2002; Critical Ecosystem Partnership Fund 2003).

This article analyses the patterns of plant diversity in the Hantam, Tanqua and Roggeveld areas. Plant diversity parameters used include species richness at different scales, species evenness and the Shannon and Simpson indices of diversity. These results can assist in guiding conservation efforts in the Hantam–Tanqua–Roggeveld subregion.

## Study area

The Hantam, Tanqua and Roggeveld as defined in this study, lie in the predominantly winter rainfall region of the Northern and Western Cape provinces of South Africa and cover an area of approximately three million hectares. Annual rainfall ranges from 50 mm to 300 mm, with a maximum of 467 mm recorded for Sutherland. Although described as a winter rainfall area, some summer thunderstorms do contribute to the annual rainfall (Schulze 1997; Weather Bureau 1998).

Topographically, the Hantam, Tanqua and Roggeveld differ vastly. The Hantam landscape is gently undulating to steeply rolling, whereas the Tanqua Karoo covers vast plains with scattered inselbergs. The escarpment, formed by the Roggeveld, Komsberg and Nuweveld Mountains, separates the Tanqua Karoo from the Roggeveld plateau, which stretches eastwards from the escarpment into the interior

of South Africa. Altitude ranges from approximately 290 m above sea level in the Tanqua Karoo to about 1800 m above sea level along the Roggeveld escarpment.

Shallow lithosols and duplex soils characterise the Hantam Karoo, whilst scattered dolerite intrusions produce red structural and red vertic clays. Tanqua Karoo soils comprise shallow lithosols that often include deep unconsolidated deposits in the alluvial parts or desert pavement. Soils of the Hantam Mountains and the mountains of the great escarpment are shallow stony lithosols. The occasional lowlands contain duplex soils (Francis *et al.* 2007).

The study area stretches across two South African biomes, namely the Succulent Karoo and Fynbos. Both these biomes have been recognised as global biodiversity hotspots. The Succulent Karoo occupies 111 000 km<sup>2</sup> and occurs in the western regions of Namibia and South Africa (Milton *et al.* 1997; Mucina *et al.* 2006). At both local and regional scales, it is recognised as an area of high plant species diversity (Cowling *et al.* 1989). Compared with similar arid environments, the species richness of the Succulent Karoo flora is exceptional (Cowling & Hilton-Taylor 1994). Several centres of endemism have also been recognised within the Hantam–Tanqua–Roggeveld (Hilton-Taylor 1994; Van Wyk & Smith 2001). Although the Roggeveld mountain range was included in the Succulent Karoo (SKEP) planning domain, there is some controversy as to whether it is actually part of the Fynbos Biome or the Succulent Karoo Biome (Diels 1909; Hilton-Taylor 1994; Jürgens 1997; Low & Rebelo 1996; Marloth 1908; Mucina & Rutherford 2006; Van der Merwe & Van Rooyen 2011a; Van Wyk & Smith 2001; Weimarck 1941), or even the Nama Karoo Biome (Acocks 1953, 1988; Rutherford & Westfall 1994). The Fynbos Biome, as delineated by Rutherford and Westfall (1994), constitutes the major portion of the Cape Floristic Region (CFR). This region is recognised as one of the world's plant kingdoms (Good 1947) and, in addition, is recognised as a global hotspot of diversity (Cowling & Hilton-Taylor 1994). However, there is a close affiliation between the Succulent Karoo and Fynbos Biomes and various authors have proposed the recognition of the Greater Cape Floristic Region (Born, Linder & Desmet 2007; Linder *et al.* 2010) or the Floristic Kingdom of the Greater Cape Flora (Jürgens 1997), which would include parts of both the Fynbos and the Succulent Karoo Biomes.

The latest vegetation map of South Africa (Mucina, Rutherford & Powrie 2005; Mucina & Rutherford 2006), identified 12 vegetation types within the area. A detailed phytosociological classification of the area recognised 25 subassociations, eight major plant associations and three major vegetation groups in the study area (Van der Merwe, Van Rooyen & Van Rooyen 2008a, 2008b). The latter classification forms the basis of the current study.

## Methods

In September 2005, a surveyor surveyed 40 sample plots according to Whittaker's original plant diversity plot technique (Shmida 1984) across the eight major vegetation

associations described in the area (Van der Merwe *et al.* 2008a, 2008b). Various environmental data such as topography, geology, altitude, aspect, slope, position on the slope, drainage, percentage stone and stone size, soil type and colour, erosion, trampling, and soil compaction were noted for each plot.

Plots of seven different sizes (1 m<sup>2</sup>, 5 m<sup>2</sup>, 10 m<sup>2</sup>, 20 m<sup>2</sup>, 50 m<sup>2</sup>, 100 m<sup>2</sup> and 1000 m<sup>2</sup>) were used for comparisons of species richness. The total species number per 1 m<sup>2</sup> and 5 m<sup>2</sup> was determined as the mean of the species number for the individual plots of the two respective size categories ( $n = 10$  and  $n = 2$ , respectively). Species number per 10 m<sup>2</sup> was calculated using the mean of the total number of species in ten plots of 1 m<sup>2</sup> plus two of 5 m<sup>2</sup>. Species number per 20 m<sup>2</sup> was derived by counting all species in the 1 m<sup>2</sup> and the 5 m<sup>2</sup> plots. Additionally, the mean for the 50 m<sup>2</sup> ( $n = 2$ ) plots represented the number of species in this plot size, whilst all species encountered in these two plots represented the total species number per 100 m<sup>2</sup>. The total number of species recorded at the site represented the species richness per 1000 m<sup>2</sup>.

Shannon's and Simpson's indices of diversity ( $H'$  and  $D$ , respectively) and a measure of evenness ( $E$ ) were calculated for each sampled plot at the 1000 m<sup>2</sup> (0.1 ha) size using PC-ORD (Version 4, MjM Software), which calculates the three diversity measures as follows:

$$H' = -\sum_i p_i \log p_i \quad [\text{Eqn 1}]$$

where  $p_i$  = importance probability in column  $i$ .

$$D = 1 - \sum_i p_i^2 \quad [\text{Eqn 2}]$$

Simpson's index of diversity (for an infinite population) is the complement of Simpson's original dominance index and represents the likelihood that two randomly chosen individuals will be different species.

$$E = H' / \ln(\text{species richness}) \quad [\text{Eqn 3}]$$

Throughout the article values are compared to one another across the eight main vegetation associations described in Van der Merwe *et al.* (2008a, 2008b). In addition, comparisons are made at a higher hierarchical level, for which some of the associations were grouped into larger vegetation groups:

- The three Mountain Renosterveld associations (associations 1–3 in Table 1) are collectively referred to as Mountain Renosterveld.
- The Escarpment Karoo, Hantam Karoo and Roggeveld Karoo associations (associations 4–6 in Table 1) are grouped together and called the Winter Rainfall Karoo.
- The Tanqua and Loeriesfontein Karoo association, together with the Central Tanqua Grassy Plains association (associations 7 and 8 in Table 1) make up the Tanqua Karoo.

The STATISTICA software package (versions 7 and 8, StaSoft Inc.) was used to perform statistical analyses. One-way analyses of variance (ANOVAs) with Bonferroni's *post hoc* test were performed to determine significant differences in diversity parameters between the vegetation associations and between species richness for the different plot sizes. All ANOVAs were preceded by a test for normality. Principal coordinate analysis (PCoA) was performed on species richness data for all seven plot sizes for the 40 surveyed plots using the SYN-TAX computer program (Podani 2001).

## Results

Species richness per sampled 1000 m<sup>2</sup> (0.1 ha) ranged from nine to 100 species (Table 1) and the mean per plant association from 12 to 89 species for this plot area (Figure 1). The mean number of species for the Mountain Renosterveld (79.0) was significantly higher than that of the Winter Rainfall Karoo (64.6), which, in turn, was significantly higher than that of the Tanqua Karoo at 18.6 species (Tables 1 and 2).

A one-way ANOVA to compare species richness for the different plots sizes, indicated a significant difference between the Winter Rainfall Karoo and the Mountain Renosterveld only at the 1000 m<sup>2</sup> plot size (Table 3). For all smaller plot sizes species richness was significantly lower in the Tanqua Karoo than in both the Winter Rainfall Karoo and the Mountain Renosterveld (Table 3).

A 13-fold range of evenness values was obtained for the 1000 m<sup>2</sup> (0.1 ha) plots across the entire study area. Evenness values determined across the study area ranged from 0.065 in the Tanqua Karoo to 0.820 in the Mountain Renosterveld (Table 1). In all except two cases, evenness was found to be larger than 0.4 (Table 1). Species evenness in the Mountain Renosterveld and Winter Rainfall Karoo was significantly higher than in the Tanqua Karoo (Table 2). The evenness values for the Tanqua Karoo plots were generally less than 0.5, except for two plots (Table 1), whereas evenness values for the Winter Rainfall Karoo and Mountain Renosterveld ranged from 0.501 to 0.820 (Table 1).

The diversity rankings of plots according to the Shannon ( $H'$ ) and Simpson ( $D$ ) indices were fairly similar. Both values are provided for comparisons to other studies where only one of the indices has been calculated.

The values for the Shannon index across the study area ranged 26-fold, from 0.144 (Tanqua Karoo) to 3.743 (Mountain Renosterveld) (Table 1); except for two survey plots in the Tanqua Karoo, all values were greater than 1.0. The mean Shannon index value for the Tanqua Karoo was significantly lower than for both the Winter Rainfall Karoo and the Mountain Renosterveld (Table 2). No significant difference for the Shannon index was found between the latter two vegetation groups.

The range of Simpson index values found for this study varied from 0.043 (Tanqua Karoo) to 0.944 (Mountain Renosterveld)

**TABLE 1:** Plant diversity parameters as determined for the different vegetation groups in the Hantam–Tanqua–Roggeveld subregion (spring of 2005).

Vegetation group	Plant association number	Survey plot number	Species richness	Evenness	Shannon index	Simpson index	
Mountain Renosterveld	1	W23	99	0.794	3.647	0.943	
		W24	72	0.759	3.248	0.927	
		W25	65	0.533	2.225	0.677	
		W26	82	0.635	2.797	0.788	
		W27	70	0.563	2.392	0.727	
	2	W3	75	0.587	2.533	0.783	
		W4	72	0.745	3.186	0.916	
		W11	62	0.572	2.360	0.733	
		W12	65	0.501	2.091	0.604	
		W20	79	0.706	3.087	0.897	
		W21	84	0.630	2.791	0.780	
		W28	96	0.820	3.743	0.944	
		W29	85	0.641	2.849	0.840	
		W30	93	0.544	2.464	0.667	
	3	W40	66	0.595	2.493	0.764	
W7		79	0.656	2.868	0.843		
W8		99	0.779	3.582	0.916		
Winter Rainfall Karoo	4	W5	90	0.669	3.009	0.817	
		W6	100	0.585	2.693	0.697	
		W38	70	0.506	2.150	0.724	
		W39	68	0.554	2.338	0.719	
	5	W9	63	0.505	2.092	0.663	
		W10	74	0.612	2.633	0.803	
		W31	57	0.513	2.074	0.711	
		W32	47	0.539	2.076	0.749	
		W33	61	0.503	2.066	0.581	
		W34	62	0.674	2.783	0.837	
		W35	35	0.639	2.273	0.853	
	6	W36	71	0.622	2.650	0.830	
		W37	79	0.723	3.158	0.900	
		W1	60	0.560	2.294	0.740	
		W2	66	0.563	2.358	0.654	
W22		31	0.606	2.081	0.728		
Tanqua Karoo		7	W13	30	0.415	1.143	0.449
			W14	26	0.668	2.178	0.804
	W17		13	0.742	1.902	0.735	
	W19		26	0.493	1.607	0.662	
	8	W15	14	0.170	0.450	0.145	
		W16	12	0.473	1.176	0.511	
		W18	9	0.065	0.144	0.043	

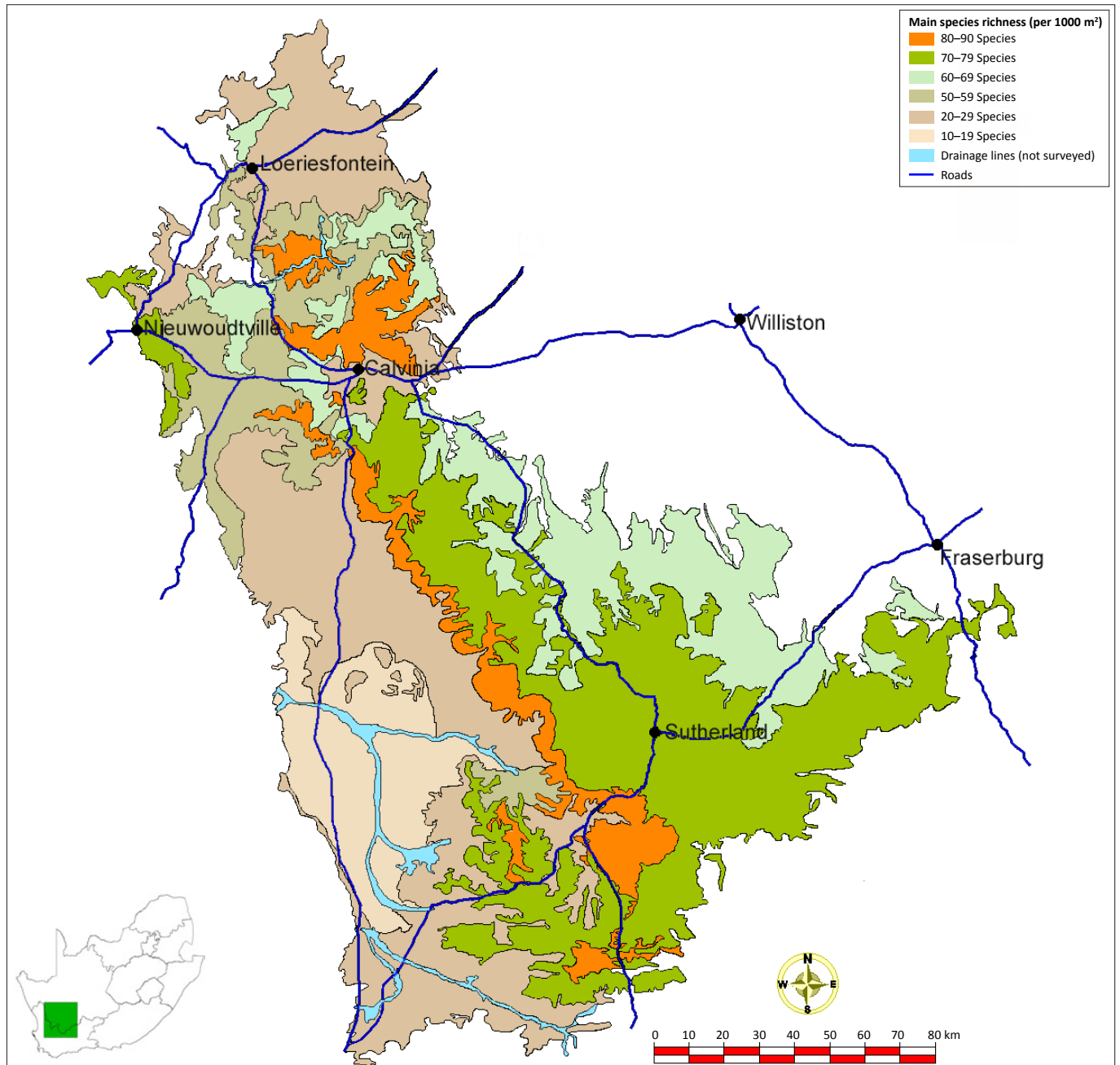
W, Whittaker plots.

(Table 1). As for the Shannon index, the mean Simpson index values for the Mountain Renosterveld and the Winter Rainfall Karoo were significantly higher than for the Tanqua Karoo. However, there was no significant difference between the Simpson index values for the Mountain Renosterveld and the Winter Rainfall Karoo (Table 2).

The PCoA of data from the seven plot sizes showed three distinct clusters (Figure 2). The cluster on the left-hand side of the ordination represents a selection of Mountain Renosterveld plots and included two plots that had been surveyed on the Gannaga Mountain Pass and belong to the Escarpment Karoo (association 4). The cluster on the right-hand side of the ordination represents the Tanqua Karoo survey plots. Except for the two plots on the Gannaga Pass all other plots surveyed in the Winter Rainfall Karoo belonged to the central cluster. However, several Mountain Renosterveld plots also fell within this cluster.

## Discussion

Cowling *et al.* (1989) reported that at a biome scale, the highest mean species richness value (per 1000 m<sup>2</sup>) was 86 for Renosterveld (which is located within the Fynbos Biome) and 74 for Succulent Karoo. The biomes with the lowest species richness were Forest (51) and Nama Karoo (47). Fynbos Biome richness ranges from 21 in southern Fynbos (Cowling *et al.* 1989) to 169 in Renosterveld (Schmiedel *et al.* 2010). Various studies have reported mean species counts of 65–68 species per 1000 m<sup>2</sup> for fynbos vegetation (Cowling, Holmes & Rebelo 1992; Cowling & Holmes 1992; Procheş, Cowling & Mucina 2003; Richardson *et al.* 1995). Kongor (2009) and Tilman *et al.* (1983) reported similar mean species richness values per 1000 m<sup>2</sup> (60 and 66, respectively) for Renosterveld, which is part of the Fynbos Biome. Some studies have, however, also reported higher mean values, for example 84 by Cowling and Holmes (1992) and 123.7 by Schmiedel *et al.* (2010). The



**FIGURE 1:** Mean species richness per 1000 m<sup>2</sup> in the Hantam–Tanqua–Roggeveld subregion. (a) 80–89 species per 1000 m<sup>2</sup> constitutes Association 3 and 4; (b) 70–79 species per 1000 m<sup>2</sup> Association 1 and 2; (c) 60–69 species per 1000 m<sup>2</sup> Association 5; (d) 50–59 species per 1000 m<sup>2</sup> Association 6; (e) 20–29 species per 1000 m<sup>2</sup> Association 7 and (f) 10–19 species per 1000 m<sup>2</sup> Association 8.

mean species richness of 79 (range: 62–99) determined for the Mountain Renosterveld vegetation group in this study therefore compares well with previously reported values for Renosterveld. When comparing sclerophyllous scrublands at a global scale, species richness of the Mountain Renosterveld vegetation is comparable to that of the South West Botanical Province in Western Australia, with a mean richness of approximately 69 species. However, with a mean of 30 species (Cowling *et al.* 1992), the chaparral of the California Floristic Province is poorer in species.

The Tanqua Karoo is located in the Succulent Karoo Biome; thus, the mean species richness value of 18.6 per 1000 m<sup>2</sup> (range 9–30) found in this study is very low compared to the mean values of between 42.5 and 49.8 (Anderson & Hoffman

2007), 56.3 (Schmiedel *et al.* 2010), 74 (Cowling *et al.* 1989) and 113 (Cowling *et al.* 1989) reported previously. The Winter Rainfall Karoo vegetation group, which also forms part of the Succulent Karoo, had a mean species richness value of 64.6 per 1000 m<sup>2</sup> (range 31–100). These values lie between the means cited by Cowling *et al.* (1989) and Anderson and Hoffman (2007). Since the annual and geophytic species constitute a large component of the Succulent Karoo and Fynbos Biome diversity, the very poor rainfall of 2005 (the year in which the data were collected) could have led to an underestimation of true species richness (see Aronson & Shmida 1992).

A comparison of species richness at different plot sizes revealed that the Tanqua Karoo plots consistently had the lowest values. However, the ranking of several of the Winter



**TABLE 2:** Mean values and significance for plant diversity parameters within the various identified vegetation groups.

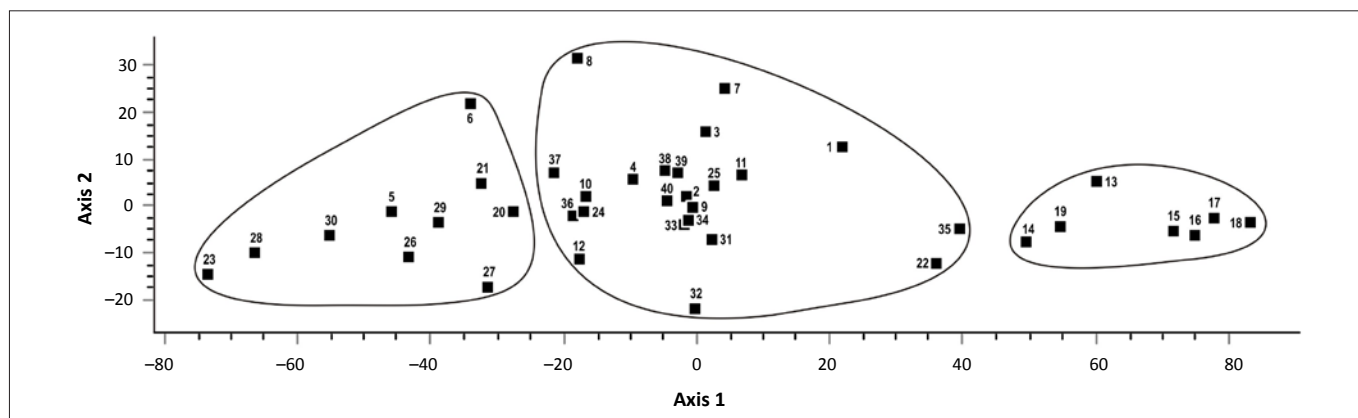
Vegetation group	Species richness	Evenness	Shannon index	Simpson index
Mountain Renosterveld	79.0 <sup>a</sup>	0.65 <sup>a</sup>	2.84 <sup>a</sup>	0.81 <sup>a</sup>
Tanqua Karoo	18.6 <sup>b</sup>	0.43 <sup>b</sup>	1.27 <sup>b</sup>	0.48 <sup>b</sup>
Winter Rainfall Karoo	64.6 <sup>c</sup>	0.59 <sup>a</sup>	2.42 <sup>a</sup>	0.75 <sup>a</sup>

Within a column, values with the same superscript do not differ significantly at  $\alpha = 0.05$ .

**TABLE 3:** Mean species richness values for a range of plot sizes within three vegetation groups in the Hantam–Tanqua–Roggeveld subregion.

Vegetation group	Plot size						
	1 m <sup>2</sup>	5 m <sup>2</sup>	10 m <sup>2</sup>	20 m <sup>2</sup>	50 m <sup>2</sup>	100 m <sup>2</sup>	1000 m <sup>2</sup>
Mountain Renosterveld	12.9 <sup>a</sup>	21.6 <sup>a</sup>	31.1 <sup>a</sup>	38.3 <sup>a</sup>	39.9 <sup>a</sup>	49.7 <sup>a</sup>	79.1 <sup>a</sup>
Tanqua Karoo	2.2 <sup>b</sup>	3.5 <sup>b</sup>	5.4 <sup>b</sup>	6.6 <sup>b</sup>	7.3 <sup>b</sup>	8.9 <sup>b</sup>	18.6 <sup>b</sup>
Winter Rainfall Karoo	9.5 <sup>a</sup>	16.2 <sup>a</sup>	25.0 <sup>a</sup>	30.9 <sup>a</sup>	32.5 <sup>a</sup>	41.1 <sup>a</sup>	64.6 <sup>c</sup>

Within a column, values with the same superscript do not differ significantly at  $\alpha = 0.05$ .



**FIGURE 2:** Scatter plot produced by principal coordinate analysis of species richness values for seven plot sizes across 40 plots surveyed in the Hantam, Tanqua and Roggeveld areas in 2005. Numbered data points denote survey plot numbers.

Rainfall Karoo and Mountain Renosterveld plots varied quite considerably with increasing plot size. For example, plot W7 had a mean of 4.6 species within 1 m<sup>2</sup> and 79.0 species within 1000 m<sup>2</sup>, whereas plot W32 had three times as many species (14.4 species) within 1 m<sup>2</sup> but only 47.0 species within 1000 m<sup>2</sup>. The observation that a significant difference in species richness between the Winter Rainfall Karoo and Mountain Renosterveld was encountered only at the 1000 m<sup>2</sup> (0.1 ha) plot size, indicates the importance of surveying relatively large plots to notice differences in species richness. This implies that most phytosociological data collected in South Africa at plot sizes of 200 m<sup>2</sup> or smaller could be insufficient to indicate differences in species richness between vegetation groups. Although a study of data from local inventories (at the 1000 m<sup>2</sup> scale) can be used for comparisons of variation in species richness across geographical space (Clinebell *et al.* 1995) it remains a local (alpha) scale study, likely to retain signal factors such as soil nutrient status, which vary measurably on local scales (Whittaker, Willis & Field 2001).

Evenness is a measure of the ratio of observed diversity to maximum diversity and is constrained between 0.0 and 1.0, with 1.0 representing a situation in which all species are equally abundant (Magurran 1988). The values found in this study were generally greater than 0.4, with Tanqua Karoo plot values seldom exceeding 0.5.

The Shannon index assumes, amongst others, that all species in the community are accounted for in the sample (Magurran

1988). However, it is likely that several species in the community could have been missed in the sampling effort and thus the number of species found in the sample must be regarded as the lower bound of the number of species in the population (Heltshe & Forrester 1983). In general, the Shannon diversity index ranges between 1.5 and 3.5 and only rarely surpasses 4.5 (Magurran 1988). Shannon index values ranged from 1.143 (Tanqua Karoo) to 3.647 (Mountain Renosterveld) in this study.

The original Simpson index has been referred to as a dominance measure because it is weighted towards the abundances of the commonest species rather than providing a measure of species diversity (Magurran 1988). In this study the complement of the original dominance measure (1–D) was used to provide an estimate of diversity and Simpson index values ranged from 0.145 (Tanqua Karoo) to 0.943 (Mountain Renosterveld) in the current study. The values derived in this study are believed to be underestimates of the potential values because of poor rainfall conditions during the data collection period.

An ordination of data for the seven plot sizes (Figure 2) confirmed that the Tanqua Karoo vegetation was very different from the vegetation in the rest of the study area, and provides for interesting observations with respect to the Mountain Renosterveld of the subregion. The right-hand cluster represented the Tanqua Karoo plots, with low species



richness, evenness, and Shannon and Simpson indices. Slopes of species–area curves for these plots were shallow and the values for the  $y$ -intercept low (Van der Merwe 2009; Van der Merwe & Van Rooyen 2011b). The left-hand cluster consisted of the ‘true’ Mountain Renosterveld plots, with high vegetation cover and high species richness, evenness, and Shannon and Simpson indices. The analysis of the species–area curves for these plots revealed a combination of steep slopes and high  $y$ -intercept values for most plots (Van der Merwe 2009; Van der Merwe & Van Rooyen 2011b). This ‘true’ Mountain Renosterveld occurs on sandstones of the Waterford Formation (Johnson *et al.* 2006) and is assumed to be more closely related to the Renosterveld of the Fynbos Biome. However, the central cluster, which comprised the Winter Rainfall Karoo plots, also included Mountain Renosterveld plots, indicating a strong link with the Succulent Karoo Biome.

Protected areas are the foundation of many conservation strategies and can be effective tools in maintaining biodiversity (Visconti *et al.* 2010). However, many protected areas are unrepresentative of biodiversity patterns or the processes that generate and maintain these patterns (Rouget 2003). Conservation plans also should not be static but should be updated regularly as new data and insights emerge, targets are adjusted and conservation priorities change (Cowling *et al.* 2003; Pressey, Cowling & Rouget 2003).

Information on species richness values and other diversity indices, as well as the ordination results that indicated the relationships between Mountain Renosterveld, Tanqua Karoo and Winter Rainfall Karoo plots, can be used to guide conservation efforts in the Hantam–Tanqua–Roggeveld subregion. For example, associations 7 and 8 have some of the lowest levels of diversity, yet, they dominate the area conserved within the Tankwa Karoo National Park. However, a small area of associations 2 and 4, which both have a high level of diversity, does fall within the park. These areas could be notably expanded and the goal of the Tankwa Karoo National Park could be to include areas within associations 1 and 6. This would actively conserve six of the eight associations in the Hantam–Tanqua–Roggeveld subregion, including some of the most diverse associations in the region.

The results of this study should not only be included in the Tankwa Karoo National Park’s expansion plans but also be incorporated into the plans of the provincial conservation agencies and those at regional and national planning levels.

## Conclusion

The Fynbos and Succulent Karoo Biomes are recognised as global diversity hotspots. This article analysed the patterns of plant diversity in a botanically unexplored part of these biomes, namely the Hantam–Tanqua–Roggeveld subregion. The species richness data collected for the Mountain Renosterveld and Winter Rainfall Karoo in this study support earlier observations of high species richness values

in the Succulent Karoo and Fynbos Biomes and confirms the conservation importance of the Hantam–Tanqua–Roggeveld subregion.

Based on species richness data at seven plot sizes, a PCoA produced three distinct clusters. The one cluster represented the low species richness, evenness, and Shannon and Simpson indices of the Tanqua Karoo plots, whilst on the other extreme a second cluster was formed by the ‘true’ Mountain Renosterveld plots, with a high vegetation cover and high species richness, evenness, and Shannon and Simpson indices. The central cluster of the ordination diagrams consisted of Winter Rainfall Karoo plots but also included some Mountain Renosterveld plots, indicating a strong link to the Succulent Karoo Biome.

In countries such as South Africa, where both funding and implementation capacity are limited, conservation actions frequently need to be scheduled (Visconti *et al.* 2010). It is therefore important that conservation planning be data driven and target directed (Margules & Pressey 2000).

Selecting areas of high species richness is often used to guide conservation efforts. This practice is based on the fact that the meaning of species richness is generally understood (Gaston 1996); many data on species richness are available and many correlations between species richness and other environmental diversity parameters have been demonstrated (Gaston 1996; Lovett *et al.* 2000; Myers *et al.* 2000; Scott *et al.* 1987). Furthermore, selecting areas of high species diversity is believed to be the most cost-effective way of allocating limited resources (Giam *et al.* 2011). However, Fleishman, Noss and Noon (2006) caution against the use of species richness in isolation to prioritise locations for conservation. Additional metrics need to be included into a multi-criteria approach, including, for example, endemism, functional significance of species and degree of habitat loss and human population pressure (Fleishman *et al.* 2006; Giam *et al.* 2011). Conservation areas should also not merely contain a high level of biodiversity initially, but ensure the persistence of species and the key processes.

The data collected in this study can be included when planning conservation efforts for the expansion of current conservation areas (e.g. the Tankwa Karoo National Park) and planning for future conservation areas, both at a local level and at regional or national levels.

## Acknowledgements

We thank the Critical Ecosystem Partnership Fund (CEPF) through the Succulent Karoo Ecosystem Plan/Programme (SKEP) initiative for funding the project. The CEPF is a joint initiative of Conservation International, the Global Environmental Facility, the Government of Japan, the MacArthur Foundation and the World Bank. A fundamental goal is to ensure that civil society is engaged in biodiversity conservation. The various people who assisted with the field work are gratefully acknowledged. CapeNature, the



Department of Tourism, Environment and Conservation (Northern Cape) and SANParks are thanked for the necessary permits and permission to conduct this research. This research was supported by the National Research Foundation under grant 61277.

## Authors' contributions

H.v.d.M. was responsible for the field surveys, data analysis and article preparation and was assisted by M.W.v.R.

## References

- Acocks, J.P.H., 1953, *Veld types of South Africa*, Botanical Survey of South Africa, Pretoria (Memoirs of the Botanical Survey of South Africa; no 28).
- Acocks, J.P.H., 1988, *Veld types of South Africa*, Dept. of Agriculture and Water Supply, Pretoria (Memoirs of the Botanical Survey of South Africa; no 57).
- Anderson, P.M.L. & Hoffman, M.T., 2007, 'The impacts of sustained heavy grazing on plant diversity and composition in lowland and upland habitats across the Kamiesberg mountain range in the Succulent Karoo, South Africa', *Journal of Arid Environments* 70, 686–700. doi:10.1016/j.jaridenv.2006.05.017
- Aronson, J. & Shmida, A., 1992, 'Plant species diversity along a Mediterranean-desert gradient and its correlation with interannual rainfall fluctuations', *Journal of Arid Environments* 23, 235–247.
- Berliner, D., 2005, *Systematic conservation planning for the forest biome of South Africa. Approach, methods and results of the selection of priority forests for conservation action*, Water and Forestry Support Programme, Department of Water Affairs and Forestry, Pretoria.
- Born, J., Linder, H.P. & Desmet, P., 2007, 'The Greater Cape Floristic Region', *Journal of Biogeography* 34, 147–162. doi:10.1111/j.1365-2699.2006.01595.x
- Cilliers, C., Theron, H., Rösch, H. & Le Roux, A., 2002, 'Succulent Karoo Ecosystem Plan, Sub-regional report, Hantam/Tanqua/Roggeveld', Succulent Karoo Ecosystem Plan report, Cape Town.
- Clinebell, H.R.R., Phillips, O.L., Gentry, A.H., Stark, N. & Zuuring, H., 1995, 'Prediction of neotropical tree and liana richness from soil and climatic data', *Biodiversity Conservation* 4, 56–90. doi:10.1007/BF00115314
- Cowling, R.M., Gibbs Russel, G.E., Hoffman, M.T. & Hilton-Taylor, C., 1989, 'Patterns of plant species diversity in southern Africa', in B.J. Huntley (ed.), *Biotic diversity in southern Africa: Concepts and conservation*, pp. 19–50, Oxford University Press, Cape Town.
- Cowling, R.M. & Hilton-Taylor, C., 1994, 'Patterns of plant diversity and endemism in southern Africa: an overview', in B.J. Huntley (ed.), *Botanical diversity in southern Africa*, pp. 31–52, National Botanical Institute, Pretoria.
- Cowling, R.M. & Holmes, P.M., 1992, 'Endemism and speciation in a lowland flora from the Cape Floristic Region', *Biological Journal of the Linnean Society* 47, 367–383. doi:10.1111/j.1095-8312.1992.tb00675.x
- Cowling, R.M., Pressey, R.L., Rouget, M. & Lombard, A.T., 2003, 'A conservation plan for a global biodiversity hotspot – the Cape Floristic Region, South Africa', *Biological Conservation* 112, 191–216. doi:10.1016/S0006-3207(02)00425-1
- Cowling, R.M., Holmes, P.M. & Rebelo, A.G., 1992, 'Plant diversity and endemism', in R.M. Cowling (ed.), *The ecology of fynbos: Nutrients, fire and diversity*, pp. 62–112, Oxford University Press, Cape Town.
- Critical Ecosystem Partnership Fund, 2003, 'Ecosystem Profile: The Succulent Karoo hotspot, Namibia and South Africa', Critical Ecosystem Partnership Fund report, Cape Town.
- Desmet, P.G., Cowling, R.M., Ellis, A.G. & Pressey, R.L., 2002, 'Integrating biosystematics data into conservation planning: Perspectives from Southern Africa's Succulent Karoo', *Systematic Biology* 51, 317–330. doi:10.1080/10635150252899798, PMID:12028735
- Driver, A., Cowling, R.M. & Maze, K.E., 2003, *Planning for living landscapes: Perspectives and lessons from South Africa*, Botanical Society of South Africa, Cape Town.
- Diels, L., 1909, 'Formationen und Florenelemente im nordwestlichen Kapland' [Formations and flora elements in the northwestern Cape], *Botanische Jahrbücher* 44, 91–124.
- Fleishman, E., Noss, R.F. & Noon, B.R., 2006, 'Utility and limitations of species richness metrics for conservation planning', *Ecological Indicators* 6, 543–553. doi:10.1016/j.ecolind.2005.07.005
- Francis, M.L., Fey, M.V., Prinsloo, H.P., Ellis, F., Mills, A.J. & Medinski, T.V., 2007, 'Soils of Namaqualand: Compensations for aridity', *Journal of Arid Environments* 70, 588–603. doi:10.1016/j.jaridenv.2006.12.028
- Gaston, K.J., 1996, 'Species richness: measure and measurement', in K.J. Gaston (ed.), *Biodiversity: a biology of numbers and difference*, pp. 77–113, Blackwell Scientific, Cambridge.
- Giam, X., Sodhi, N.S., Brook, B.W., Tan, H.T.W. & Bradshaw, C.J.A., 2011, 'Relative need for conservation assessments of vascular plant species among ecoregions', *Journal of Biogeography* 38, 55–68. doi:10.1111/j.1365-2699.2010.02383.x
- Good, R., 1947, *The geography of flowering plants*, Longmans, Green & Co., New York.
- Heltshe, J.F. & Forrester, N.E., 1983, 'Estimating species richness using the Jackknife Procedure', *Biometrics* 39, 1–11. doi:10.2307/2530802, PMID:6871338
- Hilton-Taylor, C., 1994, 'Western Cape Domain (Succulent Karoo)', in S.D. Davis, V.H. Heywood & A.C. Hamilton (eds.), *Centres of plant diversity. A guide and strategy for their conservation*, pp. 201–203, IUCN Publications Unit, Cambridge.
- Johnson, M.R., Van Vuuren, C.J., Visser, J.N.J., Cole, D.I., Wickens, H. DeV., Christie, A.D.M., Roberts, D.L. & Brandl, G., 2006, 'Sedimentary rocks of the Karoo Supergroup', in M.R. Johnson, C.R. Anhaeusser & R.J. Thomas (eds.), *The geology of South Africa*, pp. 461–500, The Geological Society of South Africa, Johannesburg/Council for Geoscience, Pretoria.
- Jürgens, N., 1997, 'Floristic biodiversity and history of African arid regions', *Biodiversity Conservation* 6, 495–514. doi:10.1023/A:1018325026863
- Kongor, R.Y., 2009, 'Plant response to habitat fragmentation: clues from species and functional diversity in three Cape lowland vegetation types of South Africa', PhD thesis, Dept. of Conservation Ecology and Entomology, University of Stellenbosch.
- Linder, H.P., Johnson, S.D., Kuhlmann, M., Mathee, C.A., Nyffeler, R. & Swartz, E.R., 2010, 'Biotic diversity in the Southern African winter-rainfall region', *Current Opinion in Environmental Sustainability* 2, 109–116.
- Lovett, J.C., Rudd, S., Taplin, J. & Frimodt-Møller, C., 2000, 'Patterns of plant diversity in Africa south of the Sahara and their implications for conservation management', *Biodiversity and Conservation* 9, 37–46. doi:10.1023/A:1008956529695
- Low, A.B. & Rebelo, A.G., 1996, *Vegetation of South Africa, Lesotho and Swaziland*, Dept. of Environmental Affairs and Tourism, Pretoria.
- Magurran, A.E., 1988, *Ecological diversity and its measurement*, Cambridge University Press, Cambridge.
- Margules, C.R. & Pressey, R.L., 2000, 'Systematic conservation planning', *Nature* 405, 43–253. doi:10.1038/35012251, PMID:10821285.
- Marloth, R., 1908, 'Das Kapland, insonderheit das Reich der Kapflora, das Waldgebiet und die Karoo, pflanzengeografisch dargestellt', *Wissenschaftliche Ergebnisse der Deutscher Tiefsee-Expedition 'Waldivia', 1898–1899 2*, T. 3 [The Cape, with special reference to the phytogeography of the Cape flora, the forests and the Karoo], Scientific results of the German Deep Sea Expedition 'Waldivia', 1898–1899 2, T. 3, Fischer, Jena.
- Milton, S.J., Yeaton, R.I., Dean, W.R.J. & Vlok, J.H.J., 1997, 'Succulent Karoo', in R.M. Cowling, D.M. Richardson & S.M. Pierce (eds.), *Vegetation of southern Africa*, pp. 99–129, Cambridge University Press, Cambridge.
- Mouillot, D. & Leprêtre, A., 1999, 'A comparison of species diversity estimators', *Research on Population Ecology* 41, 203–215.
- Mucina, L., Jürgens, N., Le Roux, A., Rutherford, M.C., Schmedel, U., Esler, K.J., Powrie, L.W., Desmet, P.G. & Milton, S.J., 2006, 'Succulent Karoo biome', in L. Mucina & M.C. Rutherford (eds.), *The vegetation of South Africa, Lesotho and Swaziland*, pp. 220–299, South African National Biodiversity Institute, Pretoria.
- Mucina, L. & Rutherford, M.C. (eds.), 2006, *The vegetation of South Africa, Lesotho and Swaziland*, South African National Biodiversity Institute, Pretoria.
- Mucina, L., Rutherford, M.C. & Powrie, L.W. (eds.), 2005, *Vegetation map of South Africa, Lesotho and Swaziland, 1:1 000 000 scale sheet maps*, South African National Biodiversity Institute, Pretoria.
- Myers, N., Mittermeier, R.A., Mittermeier, C.G., Da Fonseca, G.A.B. & Kent, J., 2000, 'Biodiversity hotspots for conservation priorities', *Nature* 403, 835–858. doi:10.1038/35002501, PMID:10706275
- Podani, J., 2001, *SYN-TAX 2000 Computer programs for data analysis in ecology and systematics*, Scientia Publishing, Budapest.
- Pressey, R.L., Cowling, R.M. & Rouget, M., 2003, 'Formulating conservation targets for biodiversity pattern and process in the Cape Floristic Region, South Africa', *Biological Conservation* 112, 99–127. doi:10.1016/S0006-3207(02)00424-X
- Proches, S., Cowling, R.M. & Mucina, L., 2003, 'Species-area curves based on relevé data for the Cape Floristic Region', *South African Journal of Science* 99, 74–476.
- Richardson, D.M., Cowling, R.M., Bond, W.J., Stock, W.D. & Davis, G.W., 1995, 'Links between biodiversity and ecosystem function in the Cape Floristic Region', in G.W. Davis & D.M. Richardson (eds.), *Mediterranean-type ecosystems: The function of biodiversity*, pp. 285–333, Springer-Verlag, Berlin.
- Rouget, M., 2003, 'Measuring conservation value at fine and broad scales: implications for a diverse and fragmented region, the Agulhas Plain', *Biological Conservation* 112, 217–232. doi:10.1016/S0006-3207(02)00415-9
- Rutherford, M.C. & Westfall, R.H., 1994, 'Biomes of Southern Africa. An objective characterisation', *Memoirs of the Botanical Survey of South Africa* 63, 1–94.
- Schmedel, U., Dengler, J., Luther-Mosebach, J., Gröngroft, A., Mucina, L., Petersen, A., Strohbach, B.J. & Jürgens, N., 2010, 'Patterns and dynamics of vascular plant diversity along the BIOTA transects in southern Africa', in U. Schmedel & N. Jürgens (eds.), *Biodiversity in southern Africa. Volume 2: Patterns and processes at regional scale*, pp. 118–135, Klaus Hess, Göttingen.
- Schulze, R.E., 1997, *South African Atlas of Agrohydrology and – Climatology*, Water Research Commission, Pretoria.
- Scott, J.M., Csuti, B., Jacobi, J.D. & Estes, J.E., 1987, 'Species richness: A geographical approach to protecting future biological diversity', *BioScience* 37, 782–788. doi:10.2307/1310544
- Shmida, A., 1984, 'Whittaker's plant diversity sampling method', *Israel Journal of Botany* 33, 41–46.





- Tilman, D., Bond, W.J., Campbell, B.M., Kruger, F.J., Linder, H.P., Scholz, A., Taylor, H.C. & Witter, M., 1983, 'Origin and maintenance of plant species diversity', in J.D. Day (ed.), *Mineral nutrients in Mediterranean ecosystems*, Council for Scientific and Industrial Research, Pretoria (South African National Scientific Programmes; Report no. 71).
- Van der Merwe, H., 2009, 'Patterns of plant diversity in the Hantam-Tanqua-Roggeveld subregion of the Succulent Karoo, South Africa', PhD thesis, Dept. of Plant Science, University of Pretoria.
- Van der Merwe, H., Van Rooyen, M.W. & Van Rooyen, N., 2008a, 'Vegetation of the Hantam-Tanqua-Roggeveld subregion, South Africa. Part 1. Fynbos Biome related vegetation', *Koedoe* 50, 61–71.
- Van der Merwe, H., Van Rooyen, M.W. & Van Rooyen, N., 2008b, 'Vegetation of the Hantam-Tanqua-Roggeveld subregion, South Africa. Part 2. Succulent Karoo Biome related vegetation', *Koedoe*, 50, 160–183.
- Van der Merwe, H. & Van Rooyen, M.W., 2011a, 'Life form spectra in the Hantam-Tanqua-Roggeveld, South Africa', *South African Journal of Botany* 77, 371–380. doi:10.1016/j.sajb.2010.10.002
- Van der Merwe, H. & Van Rooyen, M.W., 2011b, 'Species–area relationships in the Hantam-Tanqua-Roggeveld, Succulent Karoo, South Africa', *Biodiversity and Conservation* 20(6), 1183–1201. doi:10.1007/s10531-011-0022-3
- Van Wyk, A.E. & Smith, G.F. (eds.), 2001, *Regions of floristic endemism in southern Africa: A review with emphasis on succulents*, Umdaus Press, Pretoria.
- Visconti, P., Pressey, R.L., Segan, D.B. & Wintle, B.A., 2010, 'Conservation planning with dynamic threats: the role of spatial design and priority setting for species' persistence', *Biological Conservation* 143, 756–767. doi:10.1016/j.biocon.2009.12.018
- Weather Bureau, 1998, *Climate of South Africa. Climate statistics up to 1990*, WB 42, Government Printer, Pretoria.
- Weimarck, H., 1941, 'Phytogeographical groups, centres and intervals within the Cape flora', *Lunds Universitets Årsskrif Avd. 2*(37), 1–143.
- Whittaker, R.J., Willis, K.J. & Field, R., 2001, 'Scale and species richness: towards a general, hierarchical theory of species diversity', *Journal of Biogeography* 28, 453–470. doi:10.1046/j.1365-2699.2001.00563.x
- Wilsey, B.J. & Potvin, C., 2000, 'Biodiversity and ecosystem functioning: importance of species evenness in an old field', *Ecology* 81, 887–892. doi:10.1890/0012-9658(2000)081[0887:BAEFIO]2.0.CO;2