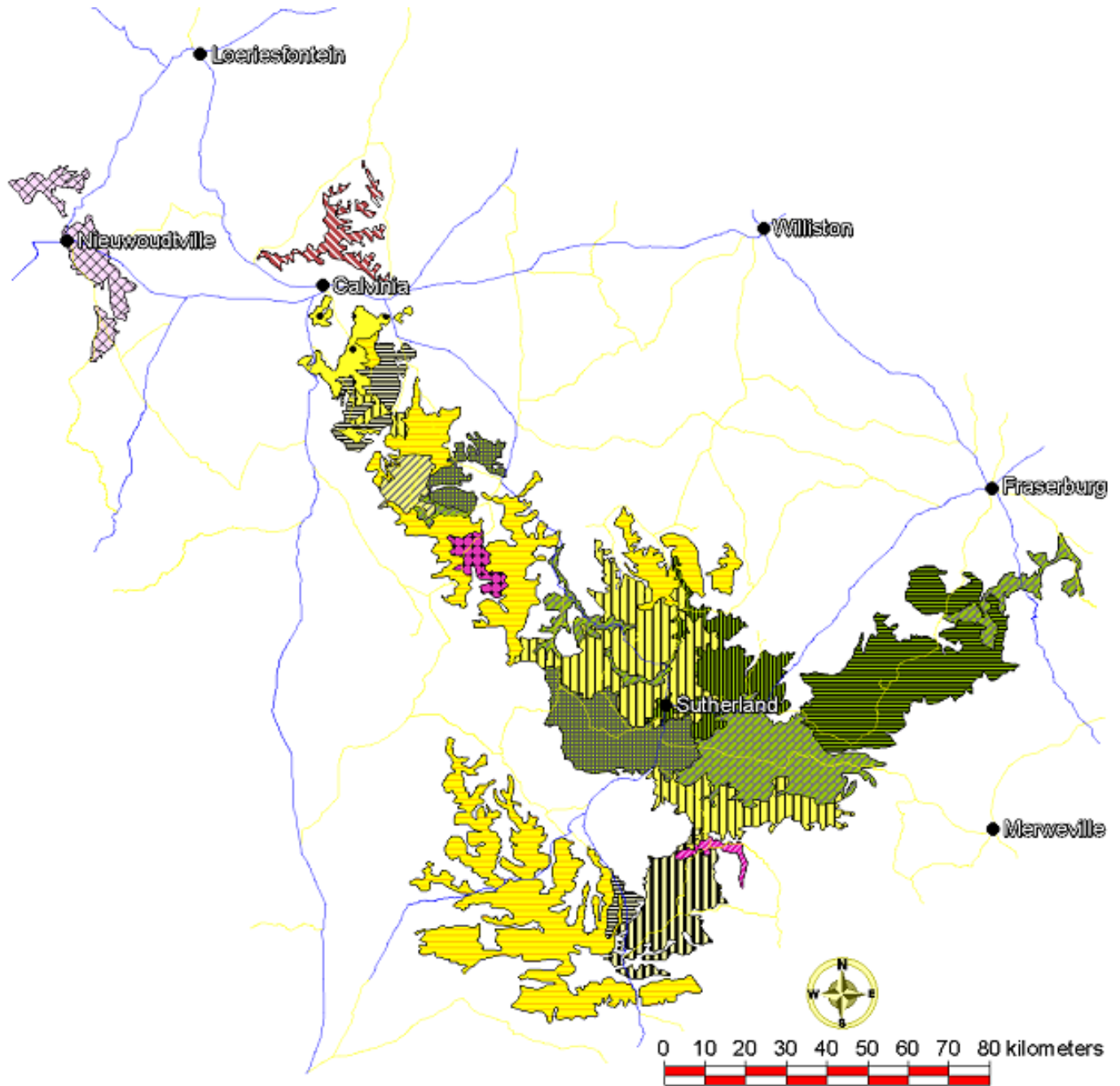


FIGURE 2
Vegetation map of the Mountain Renosterveld vegetation of the Hantam-Tanqua-Roggeveld subregion.



- 1.1 *Eriocephalus microphyllus* – *Rosenia oppositifolia* Mountain Renosterveld
- 1.3 *Pentzia incana* – *Rosenia oppositifolia* Mountain Renosterveld
- 1.4 *Euryops multifidus* – *Rosenia oppositifolia* Mountain Renosterveld
- 1.5 *Pteronia glomerata* – *Rosenia oppositifolia* Mountain Renosterveld
- 2.1.1 *Galenia africana* – *Dicerthamnus rhinocerotis* Mountain Renosterveld
- 2.1.2 *Oedera genistifolia* – *Dicerthamnus rhinocerotis* Mountain Renosterveld
- 2.1.3 *Senecio cakilefolius* – *Dicerthamnus rhinocerotis* Mountain Renosterveld
- 2.1.4 *Euryops lateriflorus* – *Dicerthamnus rhinocerotis* Mountain Renosterveld
- 2.2 *Dimorphotheca cuneata* – *Dicerthamnus rhinocerotis* Mountain Renosterveld
- 2.3 *Merxmüllera stricta* – *Dicerthamnus rhinocerotis* Mountain Renosterveld
- 3. *Passerina truncata* Mountain Renosterveld
- Nieuwoudtville mosaic
- Soekop mosaic
- Welgemoed mosaic