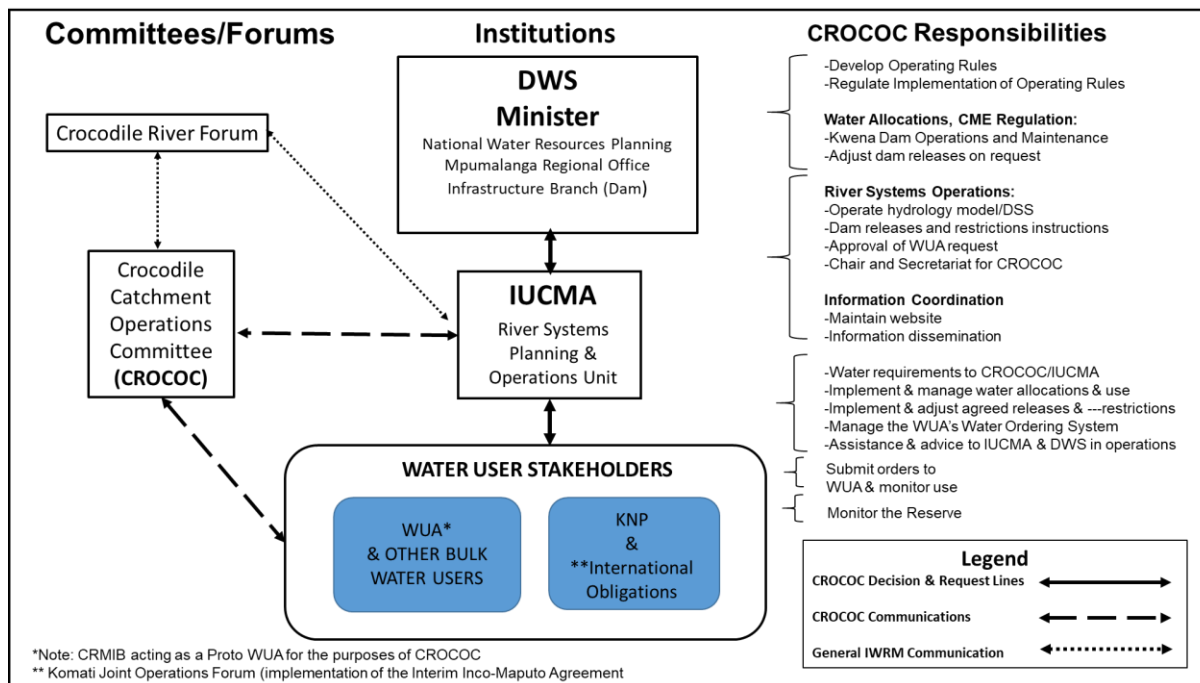


Note: This is Online Appendix 3 of McLoughlin, C.A., Riddell, E.S., Petersen, R.M. & Venter, J., 2021, 'Adaptive and transformative learning in environmental water management: Implementing the Crocodile River's Ecological Reserve in Kruger National Park, South Africa', *Koedoe* 63(1), a1663. <https://doi.org/10.4102/koedoe.v63i1.1663>

Appendix 3



Source: Adapted from Inkomati Catchment Management Agency (ICMA), 2010 *The Inkomati Catchment Management Strategy. A First-Generation Catchment Management Strategy for the Inkomati Water Management Area.*

FIGURE 1-A3: Information decision lines and governance arrangements associated with strategic adaptive management of the Crocodile River.

CRMIB: Crocodile River Major Irrigation Board; DSS: Decision Support System; DWS: Department of Water and Sanitation; IUCMA: Inkomati-Usuthu Catchment Management Agency; KNP: Kruger National Park; WUA: Water User Association.