

FIG. A.

GROWTH CURVE OF BUFFALO



Fig. (i) Bull calf \pm 5 months old.



Fig. (ii) Heifer calf \pm 5 months old.



Fig. (iii) Juvenile male \pm 16 months old.



Fig. (iv) Juvenile female \pm 16 months old.



Fig. (v) 2 Year old subadult male.



Fig. (vi) 2 Year old subadult female.

Horn configuration and growth in various age groups of African buffalo.



Fig. (vii) Three-year old subadult male.



Fig. (viii) 3 Year old subadult female.



Fig. (ix) Adult bull \pm 4 years old.



Fig. (x) Adult cow \pm 4 years old.



Fig. (xi) Adult bull \pm 5 years old.



Fig. (xii) Adult cow \pm 5 years old.

Horn configuration and growth in various age groups of African buffalo.



Fig. (xiii) Adult bull \pm 6-7 years old.



Fig. (xiv) Adult cow \pm 6-7 years old.



Fig. (xv) Adult bull in 8-15 year class.



Fig. (xvi) Adult cow in 8-15 year class.



Fig. (xvii) Very old adult bull.



Fig. (xviii) Very old adult cow.

Horn configuration and growth in various age groups of African buffalo.



Fig. (xix) Bull calf \pm 5 months old.



Fig. (xx) Heifer calf \pm 5 months old.



Fig. (xxi) Juvenile male \pm 15 months old.



Fig. (xxiii) Juvenile female \pm 16 months old.



Fig. (xxiii) Two-year old subadult male.



Fig. (xxiv) Two-year old subadult female.

Facial profile and configuration of horns in various age groups of African buffalo.



Fig (xxv) 3 Year old subadult male.

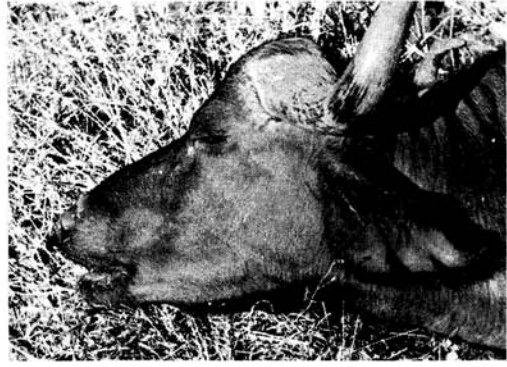


Fig. (xxvi) 3 Year old subadult female.



Fig. (xxvii) Adult bull \pm 4 years old.



Fig. (xxviii) Adult cow \pm 4 years old.



Fig. (xxix) Adult bull \pm 5 years old.



Fig. (xxx) Adult cow \pm 5 years old.

Facial profile and configuration of horns in various age groups of African buffalo.



Fig. (xxxi) Adult bull \pm 6-7 years old.



Fig. (xxxii) Adult cow \pm 6-7 years old.



Fig. (xxxiii) Adult bull in 8-15 year class.



Fig. (xxxiv) Adult cow in 8-15 year class.



Fig. (xxxv) Very old adult bull.



Fig. (xxxvi) Very old adult cow.

Facial profile and configuration of horns in various age groups of African buffalo.



Fig. (xxxvii) Bull calf \pm 5 months old.



Fig. (xxxviii) Juvenile male \pm 16 months old.



Fig. (xxxix) 2 Year old subadult male.



Fig. (xl) 3 Year old subadult male.



Fig. (xli) Adult bull \pm 4 years old.



(Fig. (xlii) Adult bull \pm 5 years old.



Fig. (xliii) Adult bull \pm 6-7 years old.



Fig. (xliv) Adult bull in 8-15 year class.



Fig. (xlv) Very old adult bull.

Incisor replacement and wear in the lower jaw of different age groups of male African buffalo.



Fig. (xLvi) Heifer calf \pm 5 months old.



Fig. (xLvii) Juvenile female \pm
16 months old.



Fig. (xLix) 3 Year old subadult female.



Fig. (L) Adult cow \pm 4 years old.



Fig. (xLviii) 2 Year old subadult female.



Fig. (Li) Adult cow \pm 5 years old.



Fig. (Lii) Adult cow \pm 6-7 years old.



Fig. (Liii) Adult cow in 8-15 year class.



Fig. (Liv) Very old adult cow.



Fig. Lv — Aerial photograph of Shablin buffalo herd.

